



Malcolm X College at West Side Learning Center Renovation Project

Project Overview



Phase 1 (Complete
2019)

State-of-the-art Biology
Labs

Phase 2

5000 sq. ft. Community
Center for Teaching and
Learning Addition and
Lobby Renovation

Phase 3

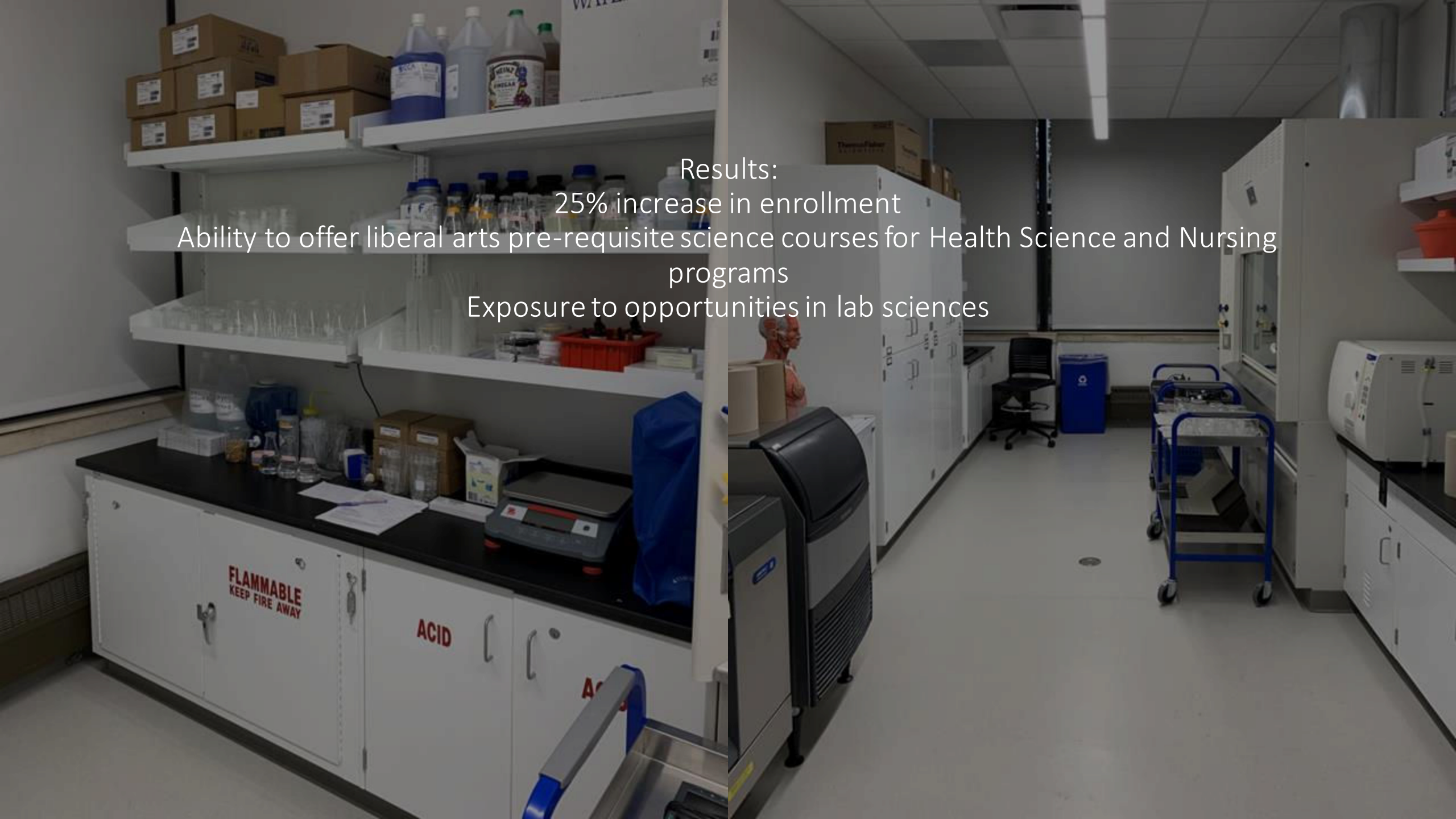
15,000 sq. ft. Nursing
and Health Care
Program Lab,
Classroom, and Office
Renovation

Phase 1





Completed 2019
Funding Source: City Colleges of Chicago
Reserve Funds
\$1M investment



Results:
25% increase in enrollment
Ability to offer liberal arts pre-requisite science courses for Health Science and Nursing programs
Exposure to opportunities in lab sciences



Phase 2



Phase 2

5000 sq. ft. Community Center for Teaching and Learning Addition
and Lobby Renovation



Phase 2
5000 sq. ft. Community Center for
Teaching and Learning Addition
and Lobby Renovation

Community Center Addition and Lobby Renovation
- View from SE



Building Entrance

Lobby

Feature wall and other elements to mirror Malcolm X College Main Campus





Lobby
Security desk and seating
Student greeting and socialization areas



Lobby
View from security desk to Main Entrance



Lobby

Information Touch Screen
Staircase to Concourse Level



Lobby exit to Courtyard |

Pre-function
Space
to Community
Center for
Teaching and
Learning





Community Center for Teaching and Learning

Capacity up to 300



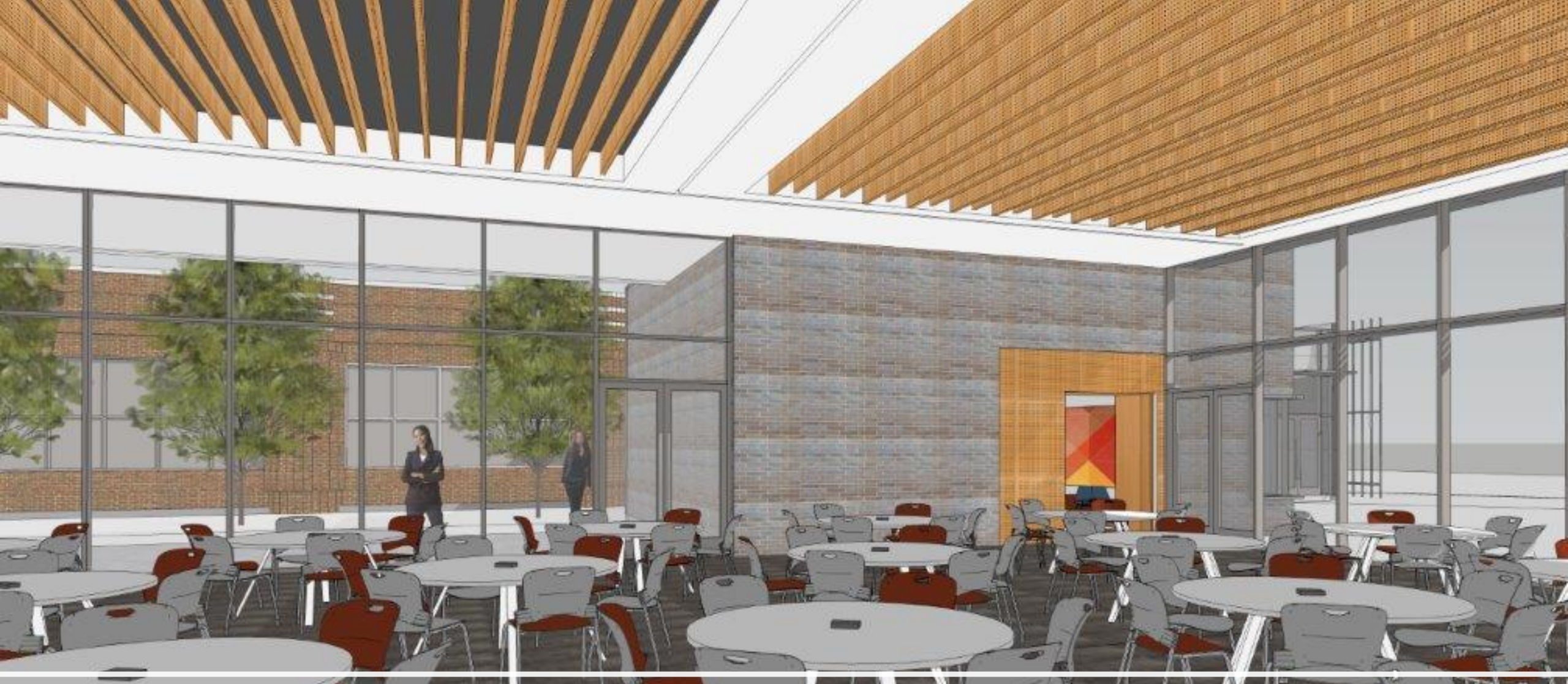
Community Center for Teaching and Learning divisible into two meeting spaces

Community Center for Teaching and Learning

Floor to ceiling
windows

Full audiovisual
capabilities





Community Center for Teaching and Learning
North view into Courtyard

Phase 2 Impact Factor

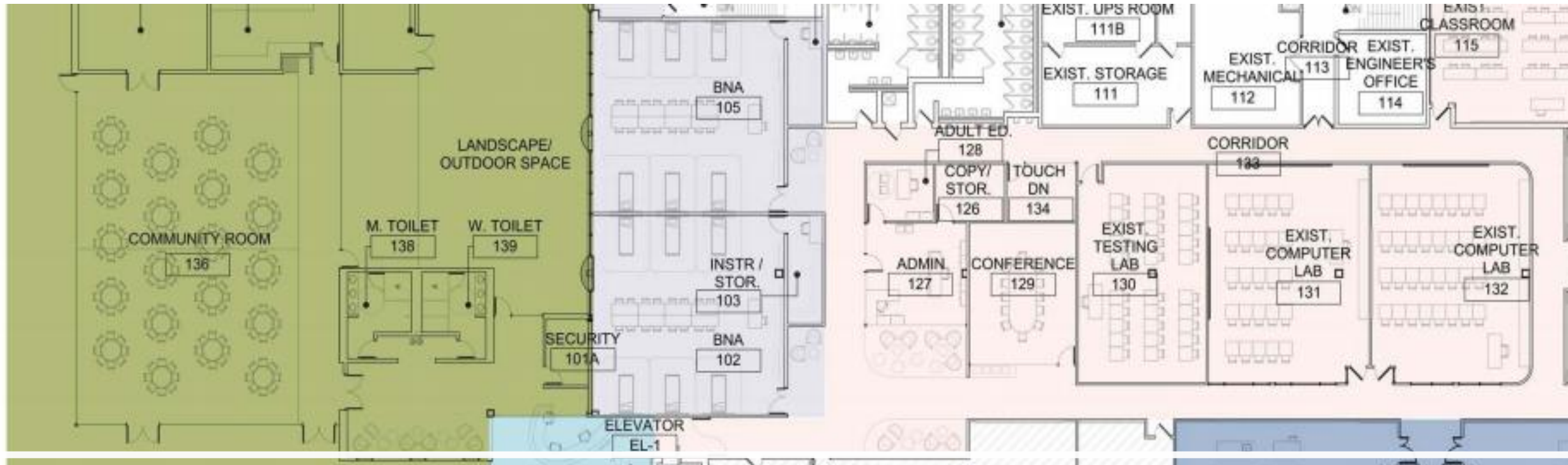
- Ability to expand instructional offerings
- Space for public and private events. Currently no space exists.
- Hosting ability for large scale continuing education based on community partner input. Requested focus:
 - Healthcare
 - Parenting
 - Technology
 - Digital literacy
 - College success



ENHANCING THE QUALITY OF LIFE SINCE 1978



WEST SIDE UNITED



15,000 sq. ft. Nursing and Health Care Program Lab, Classroom, and Office
Renovation
Phase 3



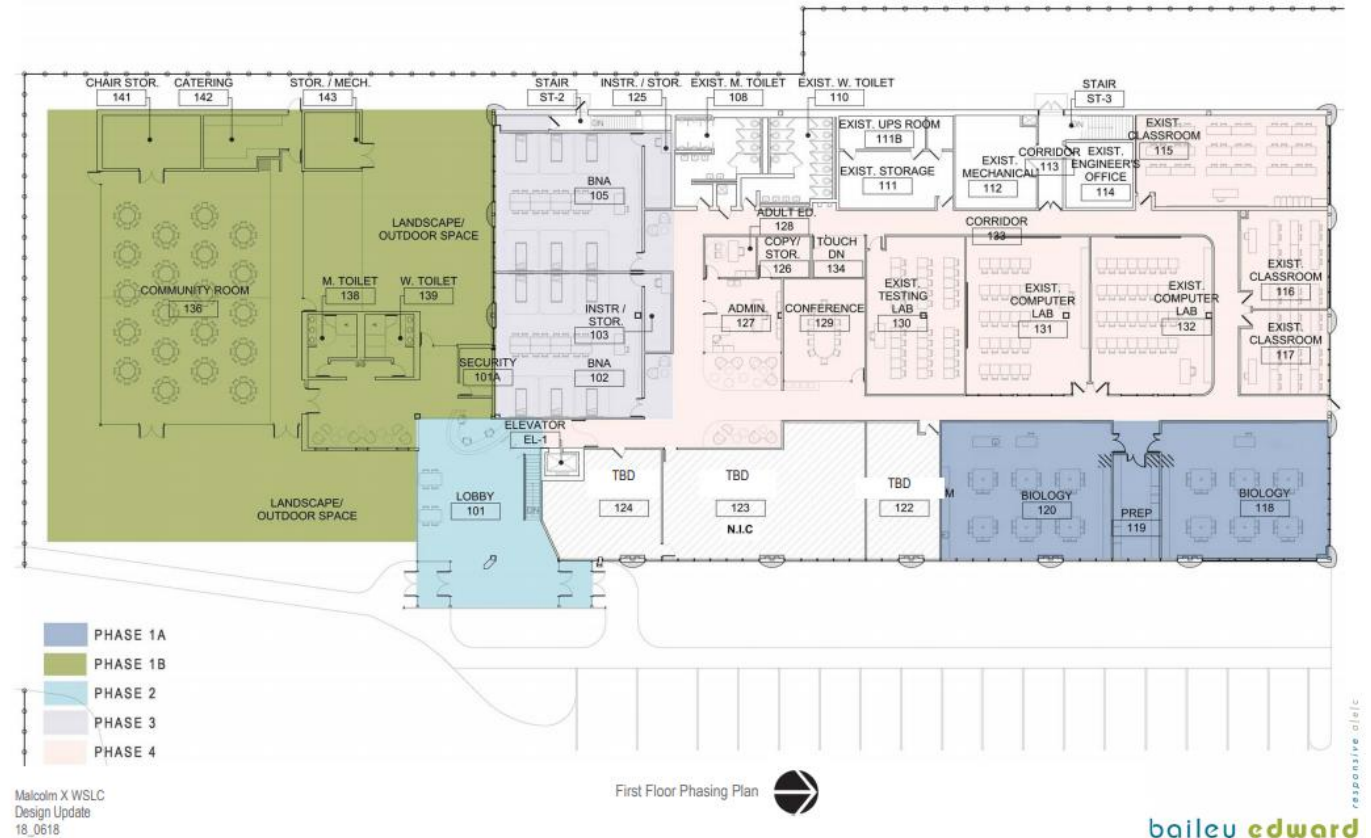
Anticipated Career Program Expansion

Adult Education Bridge-Basic
Nursing Assistant

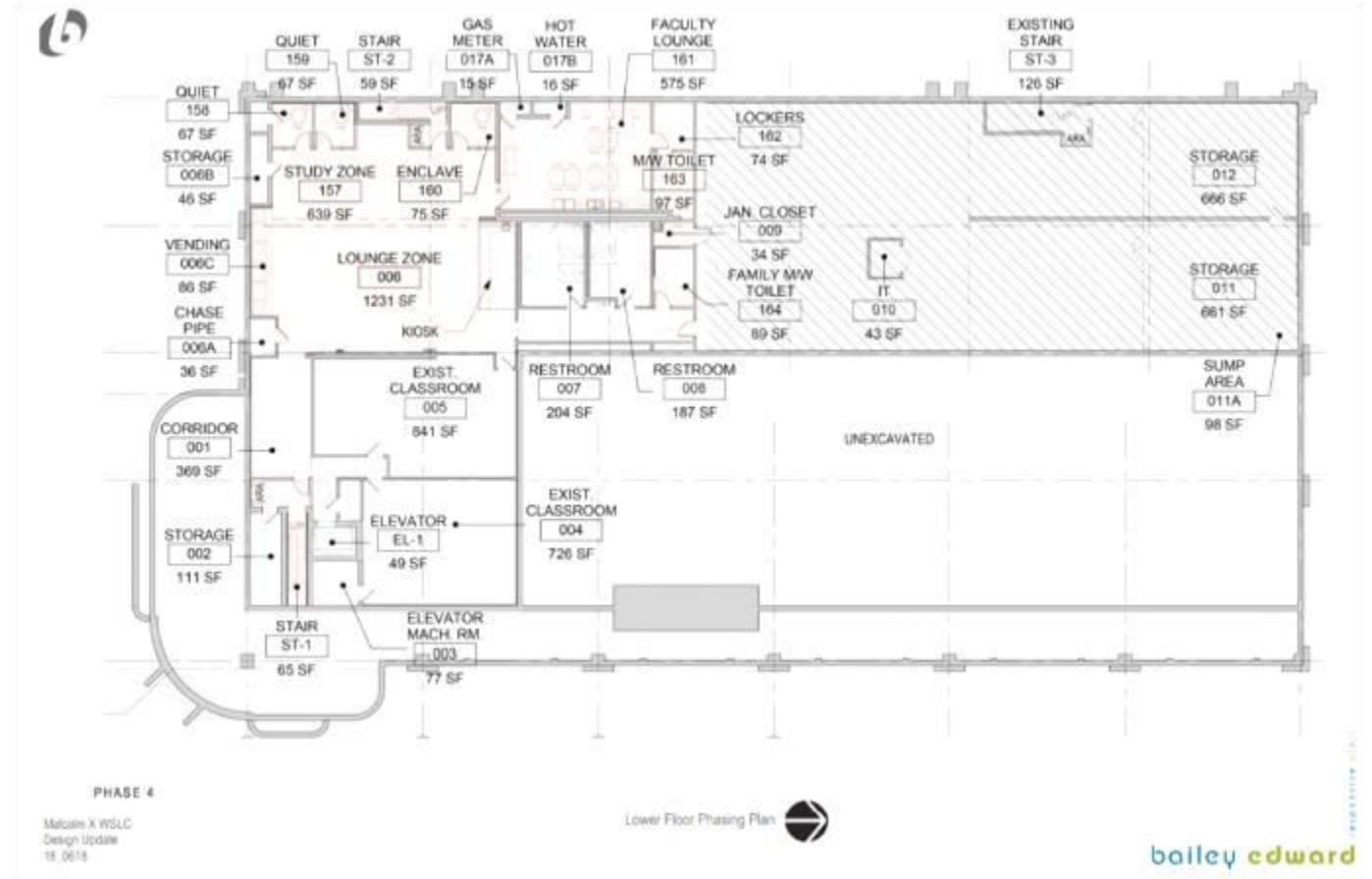
Patient Care Technician

Medical Assisting

Community Health Worker
(Substance Use/Opioid Use
Disorder Focus)



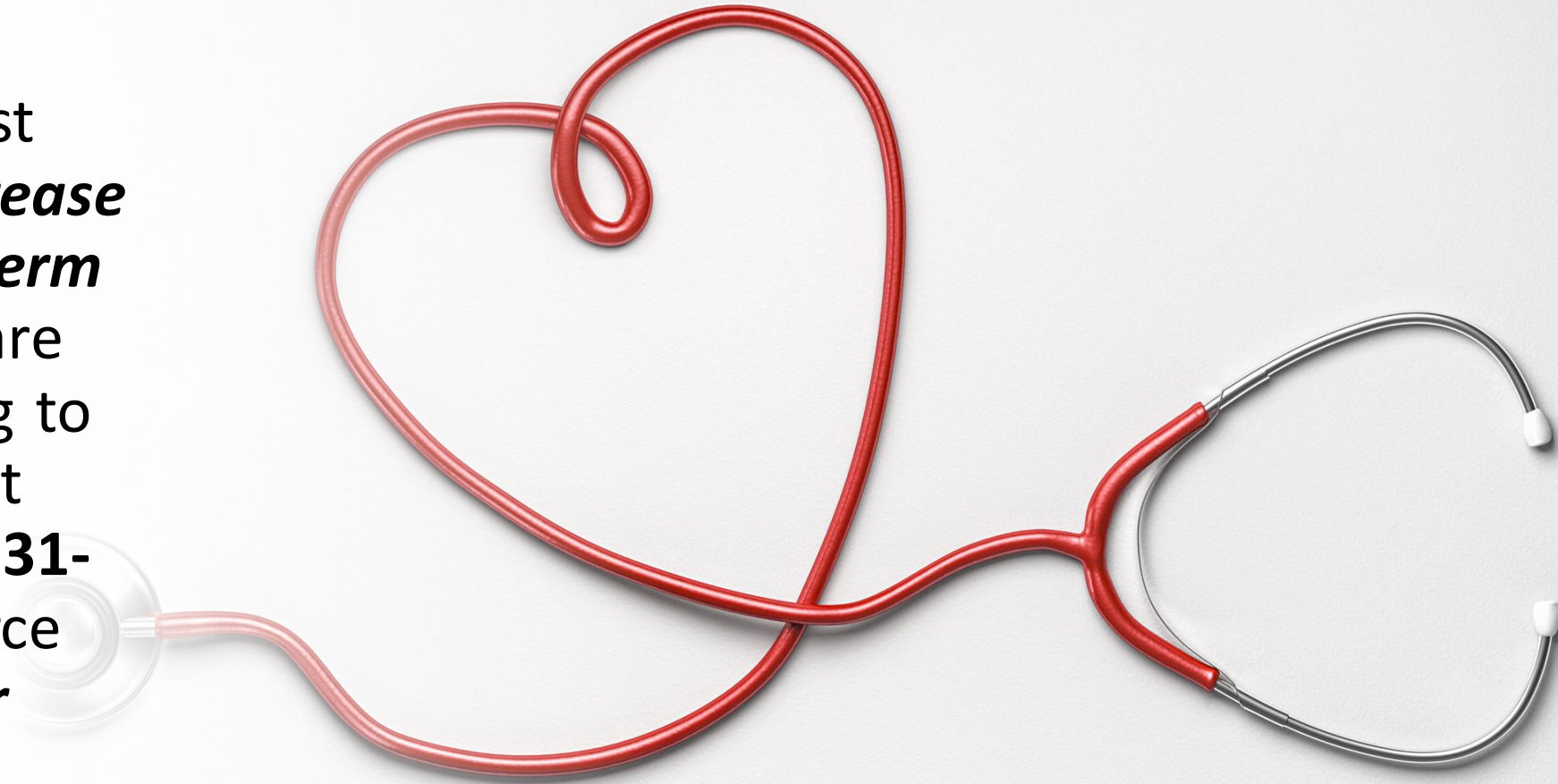
Concourse
Level
Study Zone
Offices
Dining
West Wing
Career Closet



Phase 3

Impact Factor

Anticipate >50% (at least 175 students/year) **increase** in enrollment in **short term** and **stackable** health care career pathways leading to **immediate** employment with wages of at least **\$31-42K/year** to fill workforce **shortages** on the **under resourced** West Side of Chicago.



Shovel Ready 100% Complete Construction Plans

MALCOLM X - WEST SIDE LEARNING CENTER COMMUNITY ROOM ADDITION

4624 W. MADISON AVE. CHICAGO, IL 60644

ISSUE FOR PERMIT NOVEMBER 27, 2018



EXISTING BUILDING SUMMARY

THE WEST SIDE LEARNING CENTER IS LOCATED AT 4624 W. MADISON STREET, CHICAGO, IL 60644. PER THE CHICAGO ZONING CODE CH-17-03-002, THE PROPERTY IS LOCATED IN A C1-2 DISTRICT. THE TOTAL SQUARE FOOTAGE IS 34,140 SF. THE BUILDING IS SINGLE STORY. THE BUILDING OCCUPANCY TYPE IS C-2. THE CONSTRUCTION TYPE IS II-B, WITH A CONCRETE T-BEAM ROOF STRUCTURE AND CONCRETE SUPPORT COLUMNS AND STEEL BEAMS. THE EXTERIOR WALLS IS MASONRY WITH ONE BLOCK ANCHOR IS SHOWN TO BE SOLID.

SCOPE OF WORK SUMMARY

NEW WORK TO BE CONDUCTED IN TWO PHASES:

PHASE 1B: THE ADDITION OF NEW COMMUNITY ROOM, RESTROOMS, AND OUTDOOR SPACE.

LOCATION MAP



GENERAL

G100 COVER
G200 CODE MATRIX
G300 ACCESSIBILITY INFORMATION
G400 ASSEMBLY TYPES
G500 CODE PLAN
G600 CONSTRUCTION OF CODE, ORDINANCES, AND NON-CODE FORMS
G700 FIRESTOPPING DETAILS
G800 SURVEY

CIVIL

C100 COVER SHEET
C110 EXISTING CONDITION AND DEMOLITION PLAN
C200 SITE PLAN
C300 UTILITY PLAN
C400 SPREADING PLAN
C500 EROSION CONTROL PLAN
C600 CIVIL DETAILS
C700 POST-CONSTRUCTION OPERATION AND MAINTENANCE PLAN

LANDSCAPE

L100 PLANTING PLAN
L200 PLANTING DETAILS

STRUCTURAL

S001 GENERAL STRUCTURAL NOTES
S002 GENERAL STRUCTURAL NOTES ABBREVIATIONS
S101 FOUNDATION PLAN
S102 LOWER ROOF AND EXISTING ENTRANCE FRAMING PLAN
S103 HIGH ROOF FRAMING PLAN
S201 TYPICAL BRACING DETAILS
S202 FOUNDATION DETAILS
S203 FOUNDATION DETAILS
S301 TYPICAL STEEL DETAILS
S402 ROOF & DECK DETAILS
S403 ROOF DETAILS
S404 SECTIONS AND DETAILS

ARCHITECTURAL

A100 SITE DEMO PLAN
A200 UPPER LEVEL FLOOR PLAN - DEMO - SOUTH
A300 ARCHITECTURAL SITE PLAN - NEW WORK - FINISHING PLAN
A400 LOWER LEVEL FLOOR PLAN - NEW WORK - SOUTH
A500 MAIN LEVEL FLOOR PLAN - NEW WORK - SOUTH
A600 MAIN LEVEL DIMENSION PLAN - NEW WORK - SOUTH
A700 MAIN LEVEL REFLECTED CEILING PLAN - SOUTH
A800 ROOF PLAN - NEW WORK
A900 EXTERIOR ELEVATIONS
A901 CURTAIN WALL ELEVATIONS
A902 BUILDING SECTIONS
A903 BUILDING SECTIONS
A904 ENLARGED PLUMBING & MECHANICAL ELEVATIONS
A905 INTERIOR ELEVATIONS
A906 INTERIOR ELEVATIONS
A907 INTERIOR ELEVATIONS
A908 WALL SECTIONS
A909 WALL SECTIONS
A910 EXTERIOR PLUMBING DETAILS
A911 EXTERIOR DETAILS
A912 EXTERIOR DETAILS
A913 EXTERIOR DETAILS
A914 EXTERIOR DETAILS
A915 DETAILS
A916 DETAILS
A917 ENLARGED EXTERIOR WALL DETAILS
A918 DOOR SCHEDULE
A919 ROOM FINISHES
A920 INTERIOR DETAILS

MECHANICAL

M000 MECHANICAL LEGEND AND SHEET LIST
M100 MECHANICAL DIAGRAMS
M200 MECHANICAL SCHEDULES
M300 MECHANICAL FIRST FLOOR OUTWORK DEMOLITION
M400 MECHANICAL FIRST FLOOR HYDRONIC DEMOLITION
M500 MECHANICAL FIRST FLOOR
M600 MECHANICAL FIRST FLOOR
M700 MECHANICAL ROOF
M800 MECHANICAL PIPING FIRST FLOOR
M900 MECHANICAL PIPING ROOF
M901 MECHANICAL HYDRONIC DIAGRAM
M902 MECHANICAL DETAILS
M903 MECHANICAL CONTROLS
M904 MECHANICAL CONTROLS

ELECTRICAL

E000 ELECTRICAL LEGEND
E100 OVERALL ELECTRICAL FLOOR PLAN
E200 ELECTRICAL RISER DIAGRAMS
E300 UPPER LEVEL POWER DEMOLITION PLAN
E400 UPPER LEVEL LIGHTING DEMOLITION PLAN
E500 UPPER LEVEL POWER PLAN - COMMUNITY CENTER
E600 UPPER LEVEL MECHANICAL POWER PLAN - COMMUNITY CENTER
E700 ROOF POWER PLAN - COMMUNITY CENTER
E800 UPPER LEVEL LIGHTING PLAN - COMMUNITY CENTER
E900 UPPER LEVEL SYSTEM PLAN - COMMUNITY CENTER
E901 ENLARGED ELECTRICAL PLANS
E902 ELECTRICAL SCHEDULES
E903 ELECTRICAL SCHEDULES
E904 ELECTRICAL DETAILS

PLUMBING

P000 PLUMBING LEGEND
P100 PLUMBING COMMUNITY CENTER SANITARY & VENT
P200 PLUMBING COMMUNITY CENTER DOMESTIC WATER
P300 PLUMBING SCHEDULES
P400 PLUMBING DETAILS
P500 PLUMBING ENLARGED PLAN
P600 PLUMBING RISER DIAGRAM
P700 PLUMBING RISER DIAGRAM

ACCESSIBILITY

STATEMENT OF COMPLIANCE

I have prepared, or caused to be prepared under my direct supervision, the attached plans and specifications and state that, to the best of my knowledge and belief and to the extent of my contractual obligation, they are in compliance with the Environmental Barriers Act (EBCA) and the Americans with Disabilities Act (ADA).



1 312.440.2300
F 312.440.2303
www.baileyedward.com
35 East Wacker Dr.
Suite 2800
Chicago, IL
60601-2308
©2019 Bailey Edward Design
Design Firm License No. 184-001962

Owner
City Colleges of Chicago
228 West Jackson Blvd.
Chicago, IL 60606
312-563-3299

Civil Engineer
RME
200 S. Michigan Ave.
Suite 1500
Chicago, IL 60604
312-476-6638

Structural Engineer
RME
200 S. Michigan Ave.
Suite 1500
Chicago, IL 60604
312-476-6638

Landscaping Architect
Hitchcock Design Group
22 E. Chicago Ave.
Suite 200
Chicago, IL 60640
630-961-1187

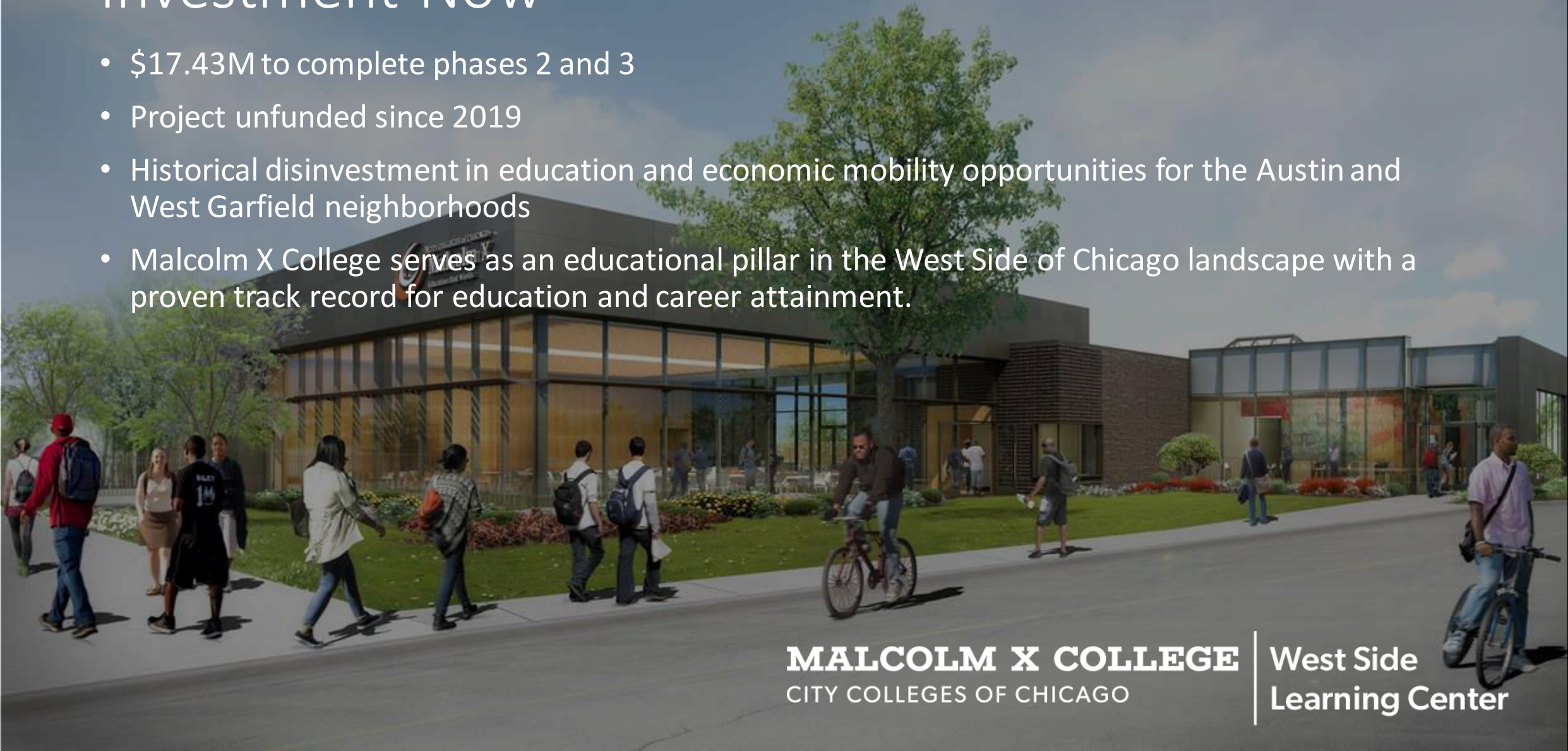
Environmental Counsel
Environmental Design
International Inc.
33 West Monroe Street
Suite 1025
Chicago, IL 60603
312-345-1420

MEP Engineer
RTM
200 S. Wacker Dr.
Suite 400
Chicago, IL 60606
312-216-0507

Date Issued: 02/08/2019 100% CONSTRUCTION DOCUMENT

Investment Now

- \$17.43M to complete phases 2 and 3
- Project unfunded since 2019
- Historical disinvestment in education and economic mobility opportunities for the Austin and West Garfield neighborhoods
- Malcolm X College serves as an educational pillar in the West Side of Chicago landscape with a proven track record for education and career attainment.



MALCOLM X COLLEGE
CITY COLLEGES OF CHICAGO

**West Side
Learning Center**